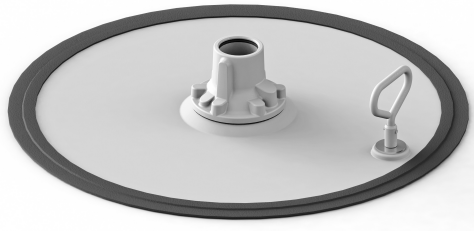


Ref.: 417009



HEAVY DUTY FOLLOWER PLATE, 185 KG DRUM, 550 - 590 MM

Follower plates eliminate channeling and air pockets, keep lubricant free from contaminants, remove all grease from the drum and aid pump prime. HD follower plates are manufactured in galvanized steel and has a central part in aluminum that adjusts to the pump tube using O'ring to create a perfect seal. For PM45 & PM60 grease pumps, Application: 185 kg - 400 lb. Max. - min. drum diameter: 590 - 550 mm

Technical data

Documentation

More information

Compatible fluids	Grease
Target product type	Pneumatic Piston Pumps Accessories

Technical data

Documentation

More information

Catalogs

Product catalogue: GENERAL EXPORT, 2024 EN (PDF)

[Download](#)